



Cut



Broadloom

 Made in Dubai, U.A.E.

TM

ROYAL SENSATION

BROADLOOM

100% SOLUTION DYED POLYESTER

FEEL THE SENSATION, LOVE THE COMFORT

5475 FOREST GRAIN

5175

PATH STEEL

(PATTERN REPEAT: 33X24CM)

“

**Enhanced Sound
And Heat Insulation,
Fire-Resistant
Protection, And
Long-Term Defense
Against Moisture,
Mold, And Mildew.**

5275

MAZE GRAIN

(PATTERN REPEAT: 33X25CM)

5277

MAZE COAL

(PATTERN REPEAT: 33X25CM)



5296

MAZE SAND

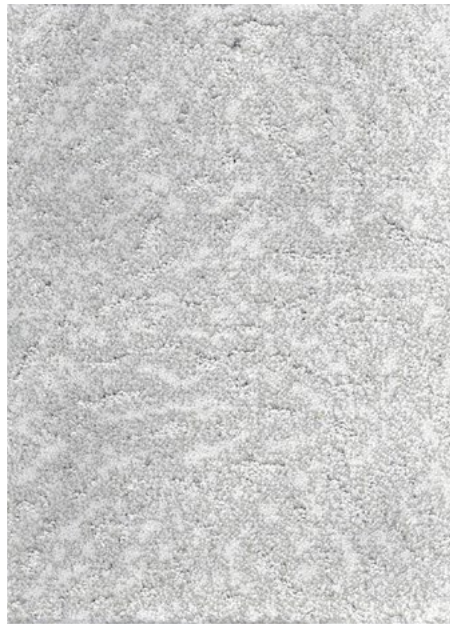
(PATTERN REPEAT: 32X25CM)



5371

CHILLON SILVER

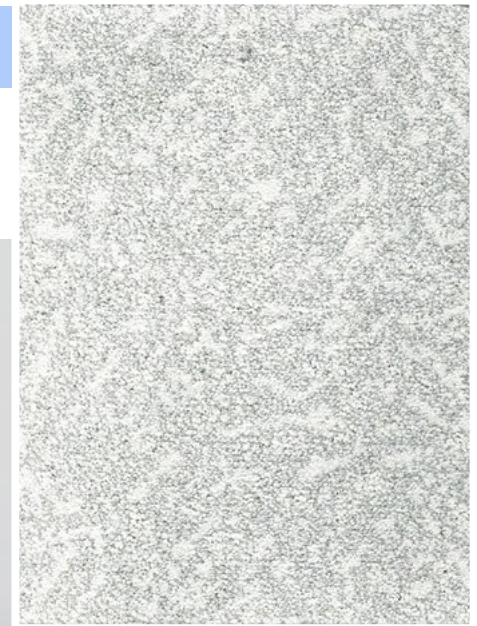
(PATTERN REPEAT: 33X28CM)



5375

CHILLON GREY

(PATTERN REPEAT: 33X28CM)



“

Action Fleece backing offers exceptional durability and insulation, protecting your home from impact noise.

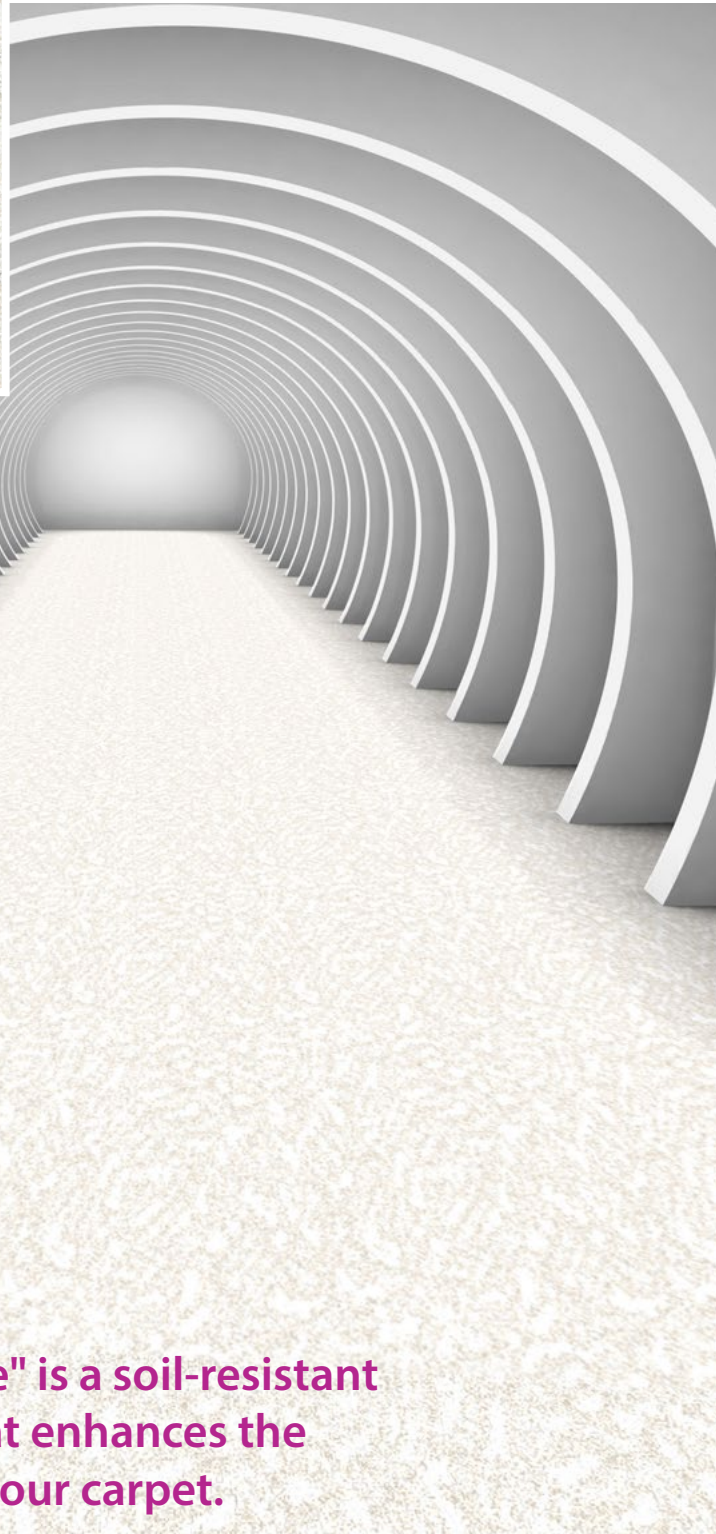




5390

CHILLON BEIGE

(PATTERN REPEAT: 33X28CM)



“
"Walk of Fame" is a soil-resistant
treatment that enhances the
longevity of your carpet.

5393

CHILLON BROWN

(PATTERN REPEAT: 33X28CM)



5475

FOREST GRAIN

(PATTERN REPEAT: 32X45CM)





5476

FOREST CHILL

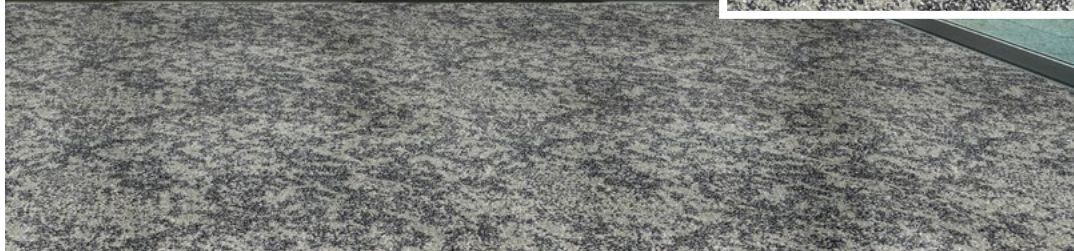
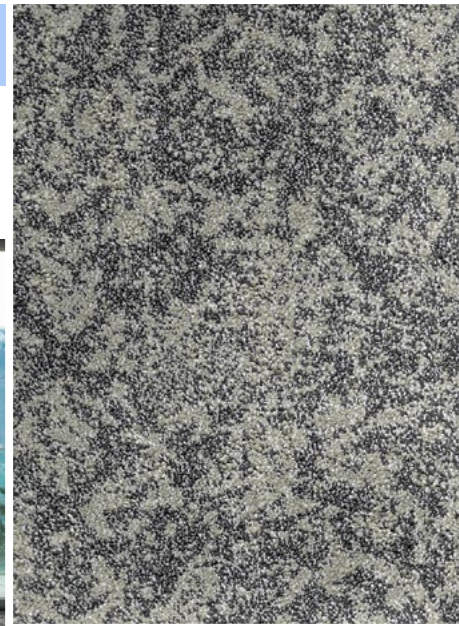
(PATTERN REPEAT: 32X45CM)



5477

FOREST COAL

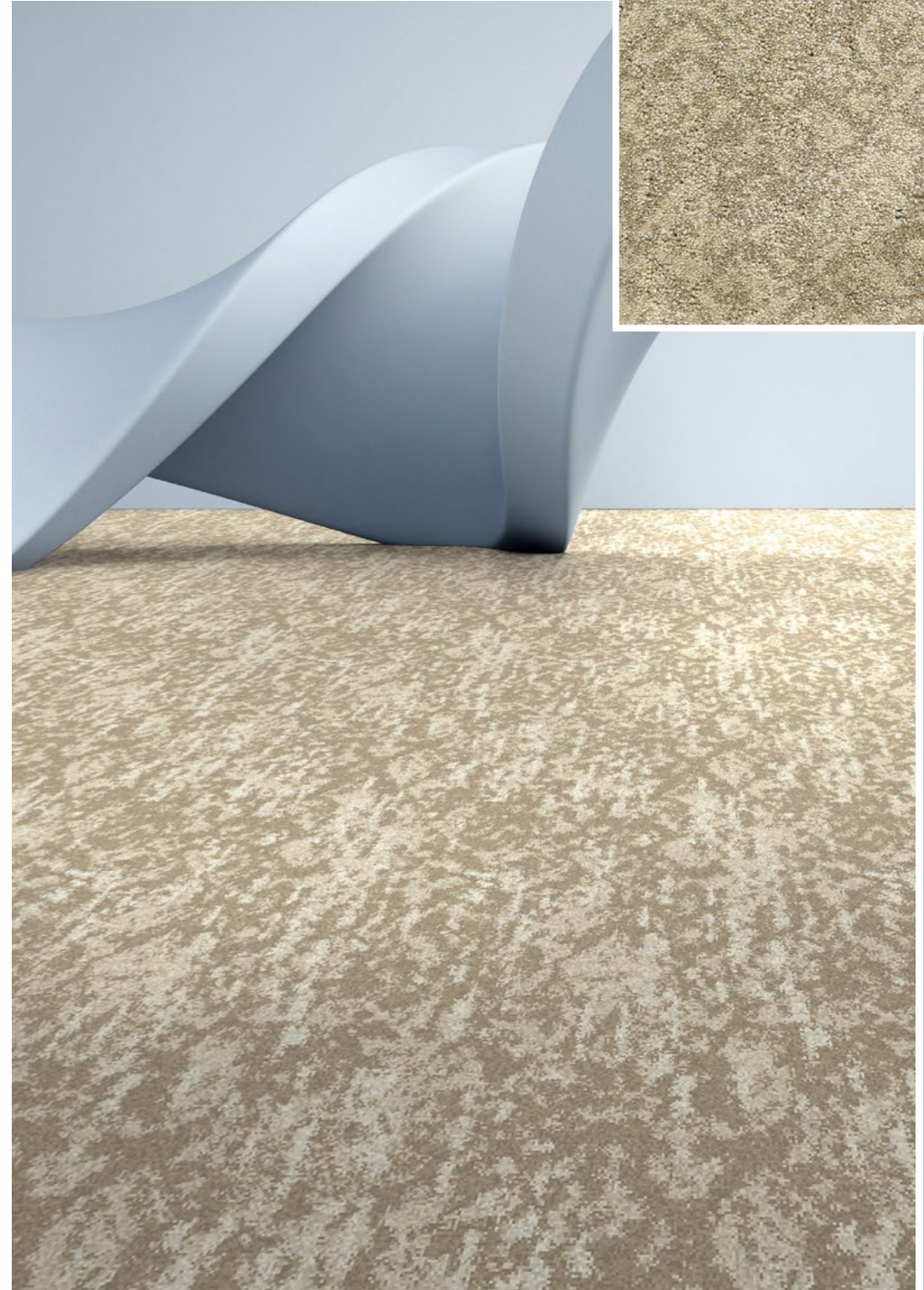
(PATTERN REPEAT: 32X45CM)



5496

FOREST SAND

(PATTERN REPEAT: 32X45CM)



ROYAL SENSATION SWATCHES



5175 PATH STEEL
(PATTERN REPEAT: 33X24CM)



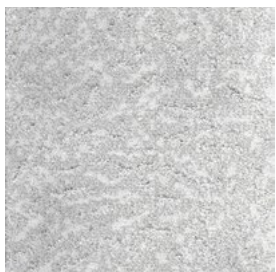
5275 MAZE GRAIN
(PATTERN REPEAT: 33X25CM)



5277 MAZE COAL
(PATTERN REPEAT: 33X25CM)



5296 MAZE SAND
(PATTERN REPEAT: 32X25CM)



5371 CHILLON SILVER
(PATTERN REPEAT: 33X28CM)



5375 CHILLON GREY
(PATTERN REPEAT: 33X28CM)



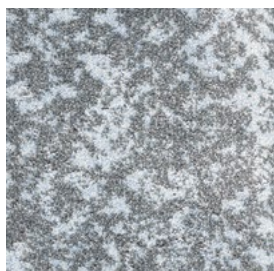
5390 CHILLON BEIGE
(PATTERN REPEAT: 33X28CM)



5393 CHILLON BROWN
(PATTERN REPEAT: 33X28CM)



5475 FOREST GRAIN
(PATTERN REPEAT: 32X45CM)



5476 FOREST CHILL
(PATTERN REPEAT: 32X45CM)



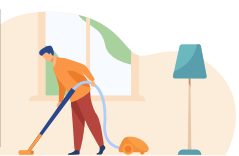
5477 FOREST COAL
(PATTERN REPEAT: 32X45CM)



5496 FOREST SAND
(PATTERN REPEAT: 32X45CM)



CARPET TILES MAINTENANCE GUIDE



ROYAL SENSATION Specifications

Construction	1/8" Tufted Multi Level Cut Loop
Yarn Composition	100% Solution Dyed Polyester
Tufted Pile Weight	Ca. 1661 g/m ² (48.99 oz/yd ²) (+/- 10%)
Total Weight	Ca. 2600 g/m ² (76.68 oz/yd ²) (+/- 10%)
Pile Height	Ca. 7 mm (+/- 0.5 mm)
Total Height	Ca. 10 mm (+/- 0.5 mm)
Density (APYD)	6399 oz/yd ³
Tuft Density	160,650 stitches/m ² (+/- 5%)
Stitch Rate	51 per 10 cm
Primary Backing	Woven
Secondary Backing	New Fleece Backing
Standard Roll Size	3.66m (+/-2%) x 30m (+/-2%)
Pile Treatment	Walk Of Fame

Performance

VOC Emission	< 0.5mg/m ² /hour (CRI GLP) (ASTM D5116-17)
Flammability	Pass - 8 (ASTM D-2859 / FF1-70 / 16CFR1630)
Colorfastness To Rubbing	≥ 4 - 5 (EN ISO 105-X12)
Colorfastness To light	≥ 4 - 5 (ISO 105 B02:2014)
Colorfastness To Water	≥ 4 - 5 (ISO 105 E01:2013)
Formaldehyde Content	Not Detected

Warranties

10 Year Residential Carpet Wear Warranty

Lifetime Antishock Carpet Warranty

The subfloor should be dry, smooth, flat, dust-free and resistant to compression and load-bearing. Where seaming is necessary, a seam sealant must be used for all such installations. Due to dye lot variations, actual material may vary slightly from the samples. Chair pads are recommended to prevent premature wear of carpet.

Ideal for Bedrooms, Living Rooms, Dining Rooms, Entrances, Hallways, Study Rooms, Hotel Guest Rooms and for Moderate Hospitality Use.



Made In Dubai, U.A.E.

Slight color variation may occur from dye lot to dye lot. Kindly check stock availability with us before confirming the order.