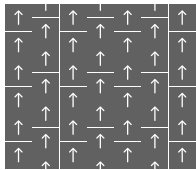


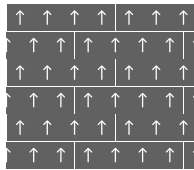
# Technical Specification

<b>Collection Name</b>	Cosmos
<b>Yarn</b>	PolyLux Synthetic Fibre Multi
<b>Construction</b>	Level Loop
<b>Dyed Method</b>	Solution Dyed
<b>Gauge</b>	1/10 inch
<b>Stitches Per Inch</b>	10 per inch
<b>Pile Height</b>	4.0 mm (+/-0.5 mm)
<b>Total Height</b>	8.0 mm (+/-0.5 mm)
<b>Pile Weight</b>	24 oz/sy (816 gm/sm)
<b>Total Weight</b>	143 oz/sy (4868 gm/sm +/- 300 gm/sm)
<b>Primary Backing</b>	Non-woven
<b>Secondary Backing</b>	Polyolefin Bac PRO
<b>Packing</b>	20 pcs(5 sm/box)
<b>Colorfastness</b>	Grade 5 - No Change (AATCC 16)
<b>Flammability</b>	Class I (ASTM E648)
<b>Smoke Density</b>	Passed (ASTM E662)
<b>Static Propensity</b>	≤3.5 kV (AATCC-134)
<b>SGBC</b>	Very Good

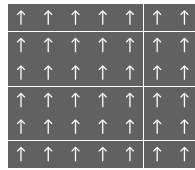
## Installation Methods:



Ashlar



Brick



Monolithic

- \* Specifications are based on average normal manufacturing tolerances, variations do not affect product performance. As with all quality carpets, slight variations in colors may occur from dye lot to dye lot.
- \* Protective chair pads are recommended under office chairs with roller castors to preserve appearance retention and to avoid excessive wear.
- \* As with all dyed products, colors are subject to dye lot variations.

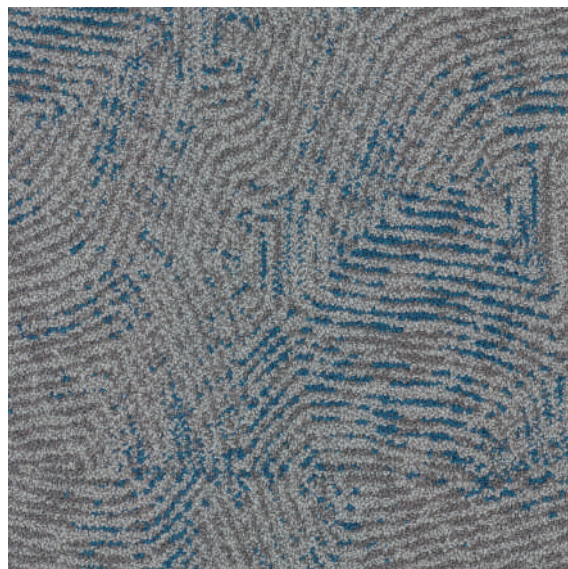




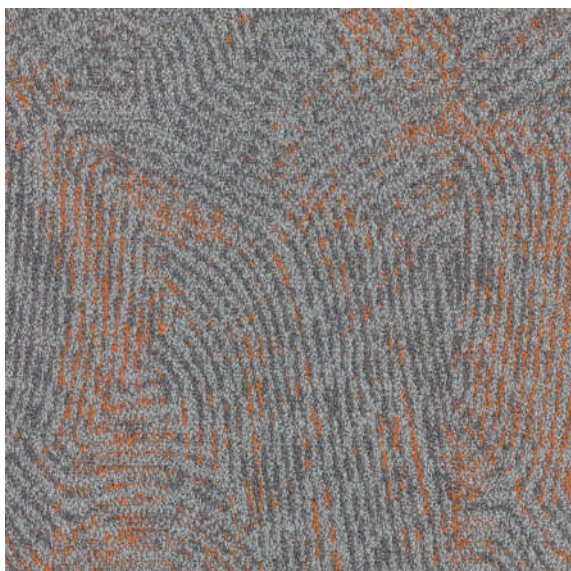
**Cosmos** (50 X 50 cm)



**CM300** Stone



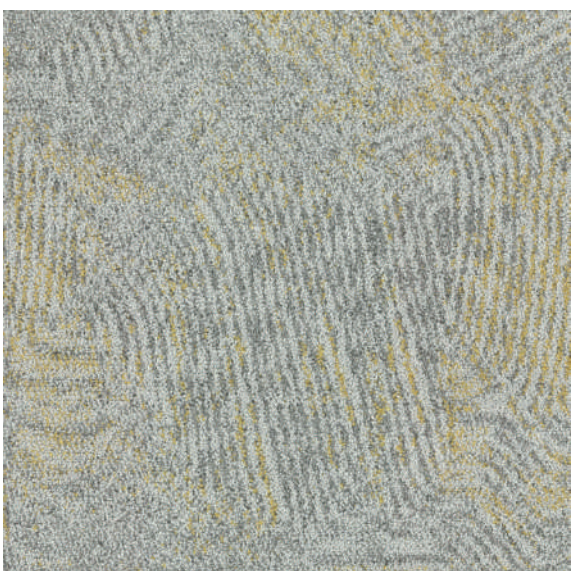
**CM302** Peninsula



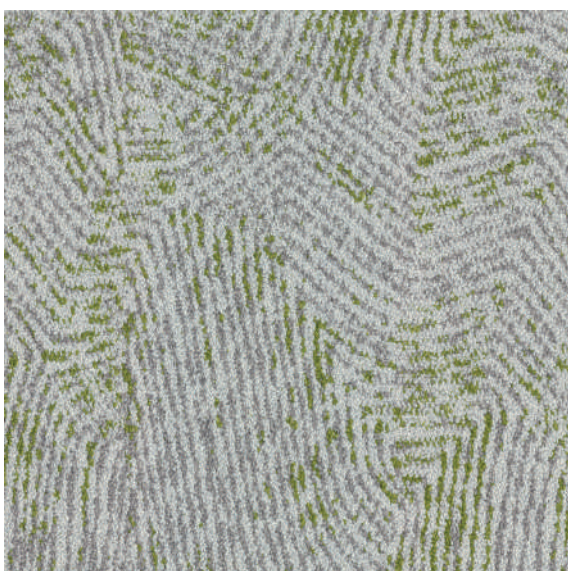
**CM304** Rust



**CM400** Concrete

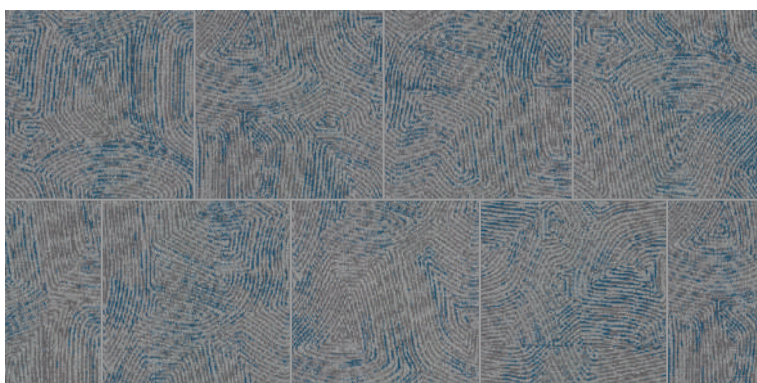


**CM403** Lemon



**CM405** Fern





**Collection**  
**Item Name**

Cosmos  
CM302 Peninsula