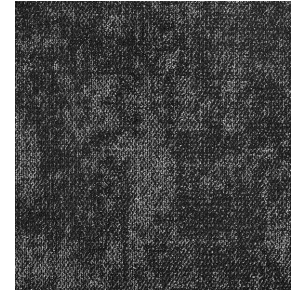
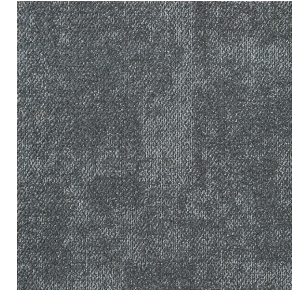




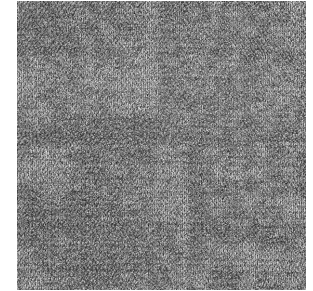
Hues Board SQ



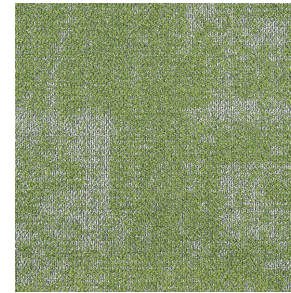
Pearly Smoke



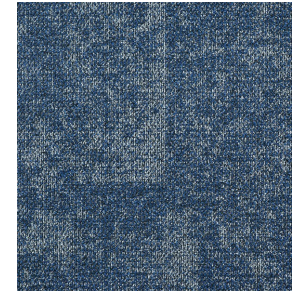
Dusky Grey



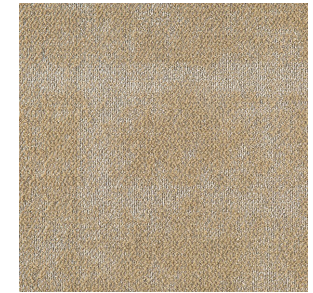
Light Pewter



Fresh Mint



Blue Swatch



Beige Shell

Specifications

Construction	1/12" Multi-Level Pattern Loop Pile
Yarn	100% BCF Nylon 6.0
Dye Method	100% Solution Dyed
Pile Weight	20 oz/yd ²
Total Thickness	6.0mm
Backing	FlexiBac
Tile Size	50cm x 50cm
Packing	20 pcs per box (5m ²)

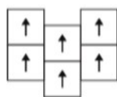
Performance

Radiant Panel	ASTM E 648 Class 1
Smoke Density	ASTM E662 Less than 450
Static Propensity	AATCC 134 Less than 3.5KV
Colour Fastness to Light	AATCC 16E ≥4
Dimension Stability	AACHEN ≤0.2%
Foot Traffic Recommendation	Heavy Commercial
Antimicrobial	Health Guard
Certificates	Singapore Green Label Certification Singapore Green Building Product Certification (4 ticks)

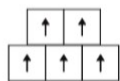
Recommended Installation Method



1/4 Turn



Ashlar



Brick

