



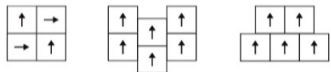
### Specifications

Construction	1/12" Multi-Level Pattern Loop
Yarn	100% Nylon 6,0
Pile Height	20 oz/yd2
Total Height	6.0m
Backing	ComfortBac
Tile Size	50cm x 50cm
Packing	20 pcs per box (5m2)

### Performance

Wear Classification	Heavy Commercial
Radiant Panel	ASTM E648 Class 1
Smoke Density	ASTM 662 Less than 450
Static Propensity	AATCC 134 Less than 3.5Kv
Color Fastness to Light	AATCC 16E ≥4
Dimension stability	AACHEN ≤0.2%
Antimicrobial	Health Guard
Certificates	Singapore Green Label Certification Singapore Green Building Product Certification (4 ticks)

### Recommended Installation Method



1/4 Turn

Ashlar

Brick

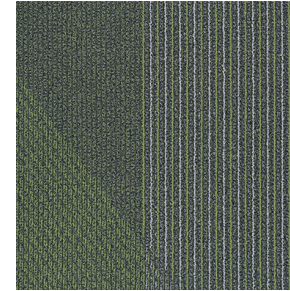


039-017-2094  
Environmentally  
Preferred Carpet

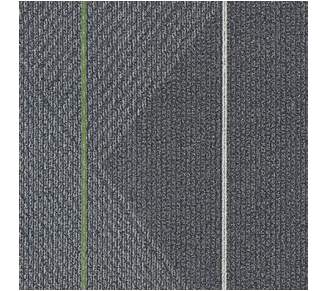
## INTRENDS SQ



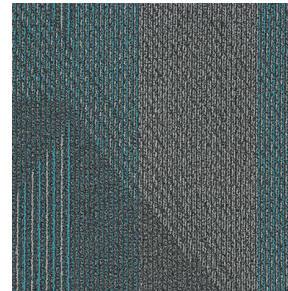
Base Grey



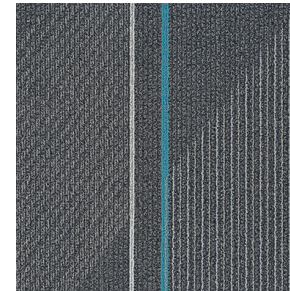
Leaves



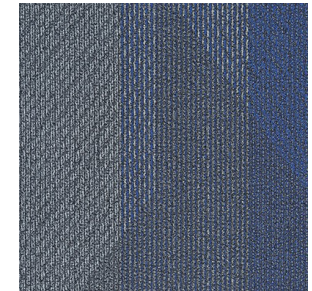
LLeaves



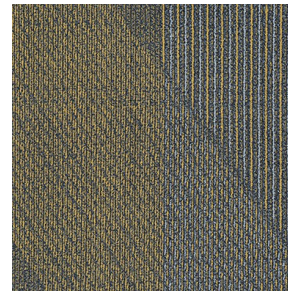
Topaz



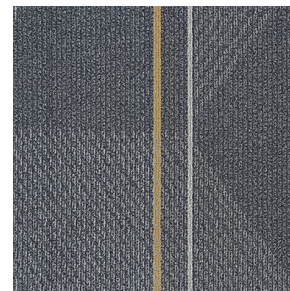
LTopaz



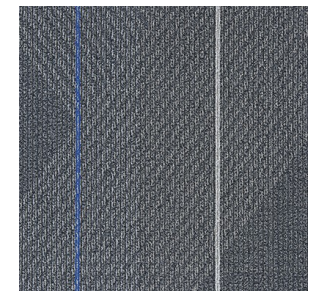
Pacific



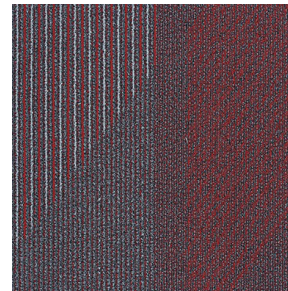
Orange Peel



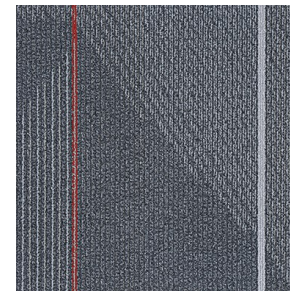
LGinger



LPacific



Spicy



LSpicy