



MANDATE 16

CARPET TILES

100% SOLUTION DYED POLYPROPYLENE



Your Companion In Comfort

MODULAR HARMONY REDEFINED



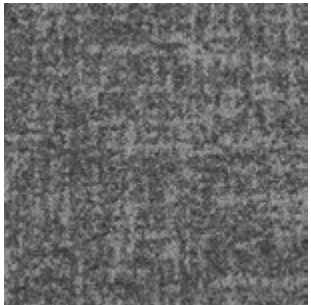
1652 URBAN DUNE



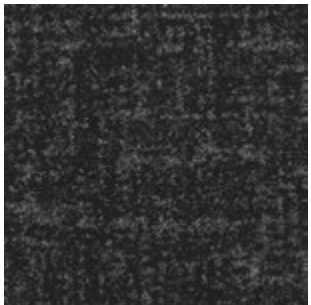
Quarter-Turn



1641 CLAY LOAM



1642 URBAN LOAM



1643 COAL LOAM



1644 SAND LOAM

Monolithic

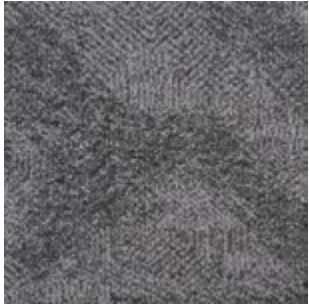


■ -25% ■ -25%
■ -25% ■ -25%

Flame-Resistant ◆ Stain-Resistant



1651 CLAY DUNE



1652 URBAN DUNE



1653 COAL DUNE

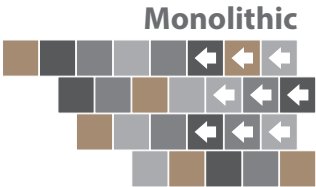


1654 SAND DUNE



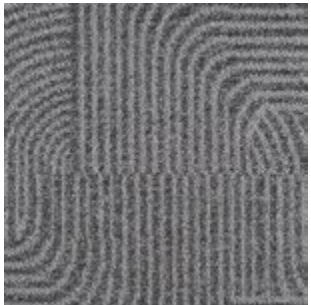
Anti-Static ♦ Acoustic Comfort

-25% -25%
-25% -25%





1691 CLAY ZEN



1692 URBAN ZEN

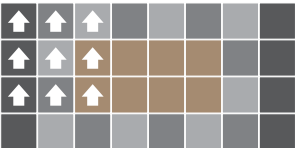


1693 COAL ZEN



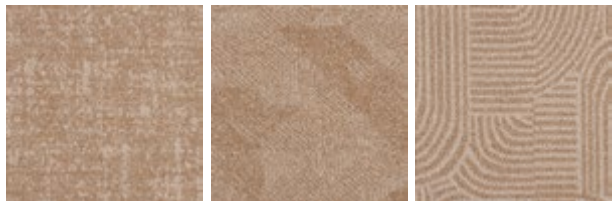
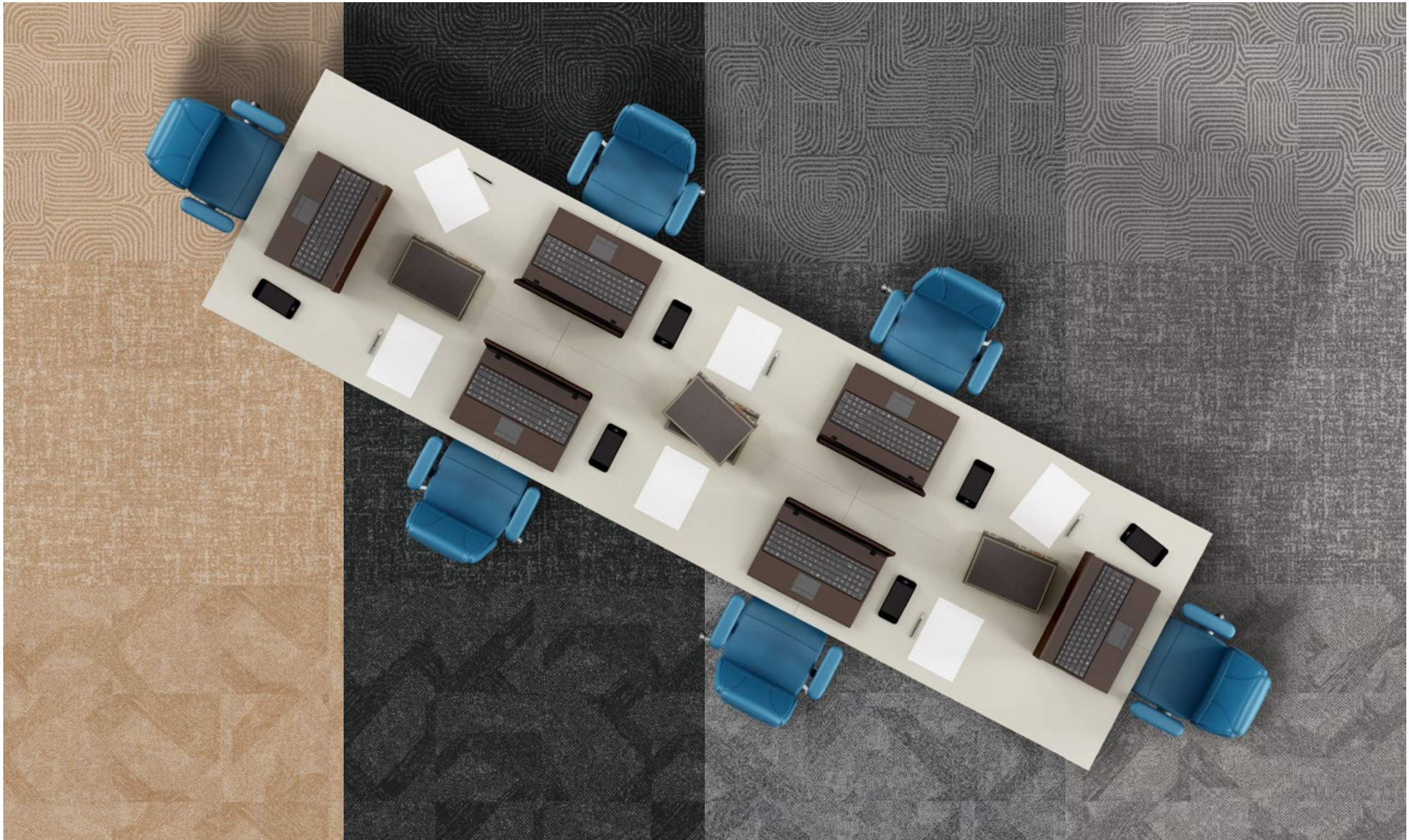
1694 SAND ZEN

Monolithic



■ -20% ■ -20%
■ -40% ■ -20%

Enhanced Dimensional Stability ◆ Superior Colourfastness



1644 SAND LOAM 1654 SAND DUNE 1694 SAND ZEN



1643 COAL LOAM 1653 COAL DUNE 1693 COAL ZEN



1642 URBAN LOAM 1652 URBAN DUNE 1692 URBAN ZEN



1641 CLAY LOAM 1651 CLAY DUNE 1691 CLAY ZEN

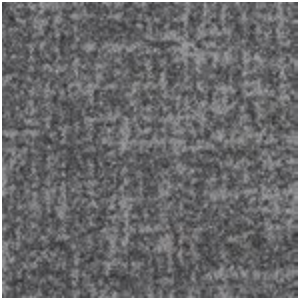
MANDATE 16

SWATCHES

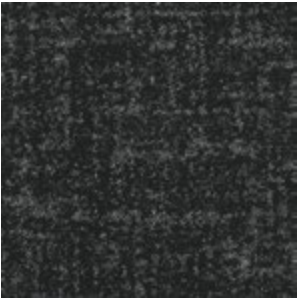
In Tile size 50cm x 50cm
Tile pattern are packed randomly per box.



1641 CLAY LOAM



1642 URBAN LOAM



1643 COAL LOAM



1644 SAND LOAM



1651 CLAY DUNE



1652 URBAN DUNE



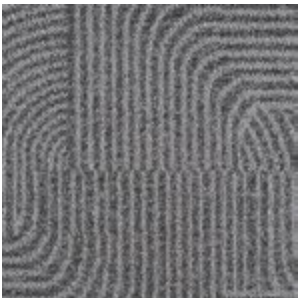
1653 COAL DUNE



1654 SAND DUNE



1691 CLAY ZEN



1692 URBAN ZEN



1693 COAL ZEN



1694 SAND ZEN



Disclaimer: The certifications included are valid as of the date this folder was created and may be updated. For the most current certifications, please contact our salesperson or visit our website.

MANDATE 16 Specifications

Construction	1/10” Multi-Level Loop Graphic
Yarn Composition	100% Solution Dyed Polypropylene
Tufted Pile Weight	ca. 678 g/m ² (20 oz/yd ²)(+/- 10%)
Total Weight	ca. 3,000 g/m ² (88.5 oz/yd ²)(+/- 10%)
Pile Height	ca. 2.8 - 5 mm (+/- 0.5 mm)
Total Height	ca. 6.5 mm (+/- 0.5 mm)
Density (APYD)	3,656.5 ozs/yd ³
Tuft Density	127,000 stitches/m ²
Stitch Rate	50 per 10cm
Backing	eBac+
Tile Size	50 cm x 50 cm
Packing	20 pcs per box (5 m ²)

Performance

(as tested by ITTS Inc. USA)

Stain Resistance	9 (AATCC-175-2003)
Static Control	Pass - Max. 4 kV (AATCC-134-2011)
Tuft Bind	Pass - 8 lbs (ASTM-D-1335)
Dimensional Stability	Pass - Max. 0.1% change (AACHEN)
Indoor Air Quality (V.O.C.)	Pass - No VOC Detected (ASTM-D5116-10)
Impact Noise Rating	ΔL: 26 dB (ISO 10140)
Sound Absorption	α _w = 0.20 (ISO 354) Hz 125 250 500 1000 2000 4000 α _s 0.01 0.03 0.8 0.28 0.35 0.43
Flammability	
- Radiant Panel	Pass - Class II (ASTM-E-648-17)
- Pill Test	Pass - 8 (ASTM-D-2859-16)
- Smoke Density	Pass - Max. 450 (ASTM-E-662-15a)
Colourfastness	
- to Light	Excellent - 5 (AATCC-16E)
- to Wet & Dry Crocking	Excellent - 5 (AATCC-165)
- to Ozone	Excellent - 5 (AATCC-129)

Warranties

10 Year Carpet Wear Warranty
Lifetime Anti-shock Carpet Warranty

Product Advisory Note:

Ensure the subfloor is clean, dry, smooth, level, dust-free, and capable of supporting loads without compression. Apply seam sealant where required during installation. Due to dye lot variations, actual colours may differ slightly from samples. Chair pads are recommended to reduce carpet wear. Ideal for Medium Contract Use.

Environment

The design and production of Mandate Series carpet tiles conforms to the ISO 14001:2004 Environmental Management System and complies with environmental regulations.

As a responsible manufacturer and to minimize our carbon footprint, a majority of our excess production materials are recycled in-house resulting in a minimum of 10% recycled content in our tile backing. Mandate Series carpet tiles does not contain any PVC in its manufactured materials and packaging.

Mandate Series carpet tiles is an environmentally friendly “green” carpet.



Installation Methods

