

# MYSTIC 5

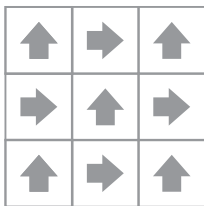
CARPET TILES



5004 FIESTA GREEN  
5002 BLAZING BLUE  
5000 THUNDER GREY



# Mix & Match



Quarter-Turn

**5000 THUNDER GREY**  
**5001 FLASH YELLOW**





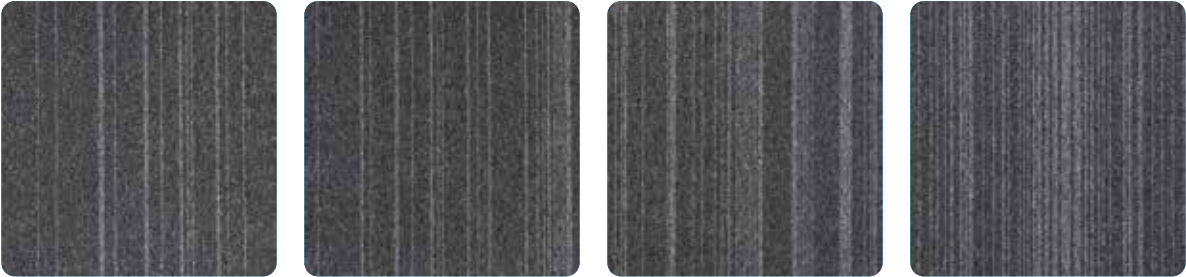
- 
- 100% Solution Dyed Polypropylene •
  - Stain-Resistant •
  - Anti-Static •
  - Flame Retardant •



# MYSTIC 5

SWATCHES

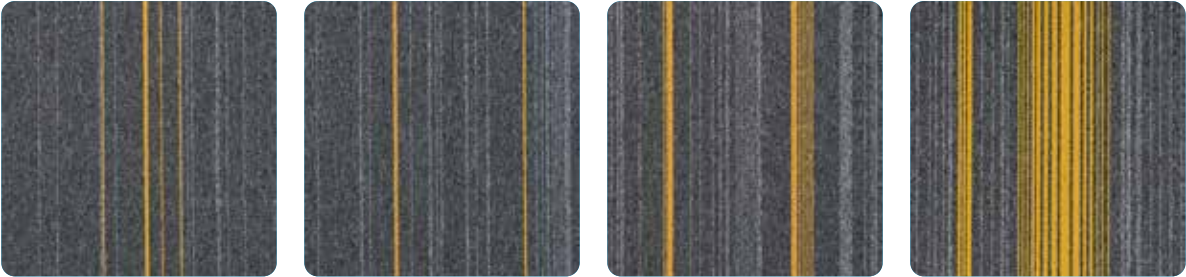
5000 THUNDER GREY



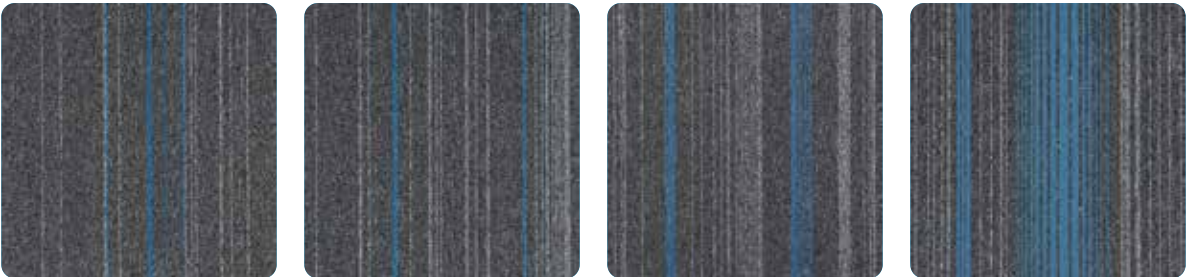
5003 CARNIVAL RED  
5000 THUNDER GREY

Brick

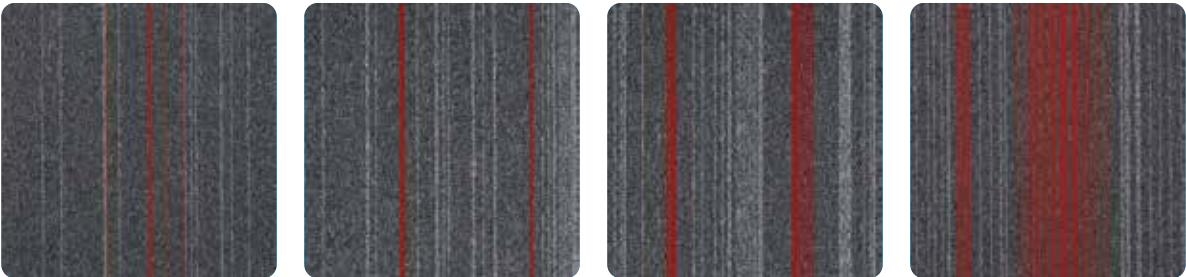
**5001 FLASH YELLOW**



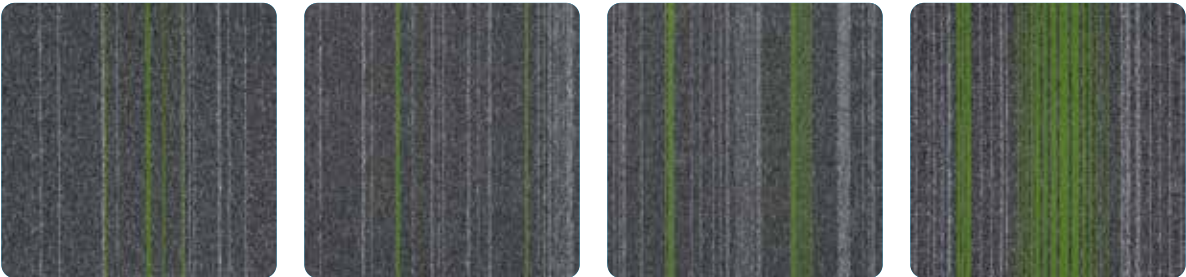
**5002 BLAZING BLUE**



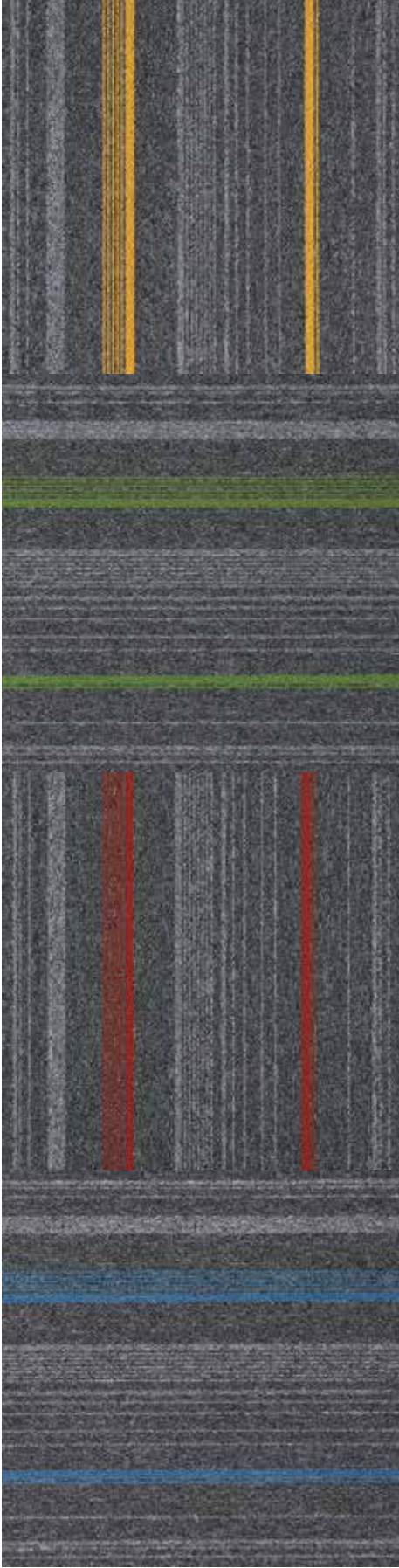
**5003 CARNIVAL RED**



**5004 FIESTA GREEN**







## MYSTIC 5 Specifications

Construction	1/10" Level Loop Pile
Yarn Composition	100% Solution Dyed Polypropylene
Tufted Pile Weight	Ca. 500 g/m <sup>2</sup> (14.7 oz/yd <sup>2</sup> ) (+/- 10%)
Total Weight	Ca. 2800 g/m <sup>2</sup> (82.6 oz/yd <sup>2</sup> ) (+/- 10%)
Pile Height	Ca. 3 mm (+/- 0.5 mm)
Total Height	Ca. 5 mm (+/- 0.5 mm)
Density (APYD)	4,481 ozs/yd <sup>3</sup>
Tuft Density	114,300 stitches/m <sup>2</sup>
Stitch Rate	45 per 10 cm
Backing	EcoAce Backing
Tile Size	50 cm x 50 cm
Packing	20 pcs per box (5 m <sup>2</sup> )

## Performance

(as tested by ITTS Inc. USA)

Stain Resistance	10 (AATCC 175-2003)
Static Control	Pass - Max. 4 kV (AATCC-134-1996)
Tuft Bind	Pass - 9.8 lbs (ASTM-D-1335)
Dimensional Stability	Pass - Max. 0.1% change (AACHEN)
Indoor Air Quality (V.O.C.)	Pass - No VOC Detected (ASTM-D5116-10)
Impact Noise Rating	ΔL: 26 dB (ISO 10140)
Sound Absorption	α <sub>w</sub> 0.20 (ISO 354) Hz 125 250 500 1000 2000 4000 α <sub>s</sub> 0.01 0.03 0.08 0.28 0.35 0.43
Flammability	
- Radiant Panel	Pass - Class II (ASTM-E-648-17)
- Pill Test	Pass - 8 (ASTM-D-2859-06)
- Smoke Density	Pass - Max. 450 (ASTM-E-662-06)
Colourfastness	
- to light	Excellent - 5 (AATCC-16E)
- to wet & dry crocking	Excellent - 5 (AATCC-165)
- to ozone	Excellent - 5 (AATCC-129)

## Warranties

10 Year Carpet Wear Warranty  
Lifetime Anti-shock Carpet Warranty  
Ideal for Medium Contract Use.

The subfloor should be dry, smooth, flat, dust-free and resistant to compression and load-bearing. Where seaming is necessary, a seam sealant must be used for all such installations. Due to dye lot variations, actual color may vary slightly from the samples. Chair pads are recommended to prevent premature wear of carpet.

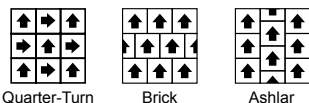
## Environment

The design and production of Mystic 5 Tile conforms to the ISO 14001:2004 Environmental Management System and complies with environmental regulations.

As a responsible manufacturer and to minimize our carbon footprint, a majority of our excess production materials are recycled in-house resulting in a minimum of 10% recycled content in our tile backing. Mystic 5 Tile does not contain any PVC in its manufactured materials and packaging.

Mystic 5 Tile is an environmentally friendly "green" carpet.

## Installation Method



**MYSTIC5**  
CARPET TILE