



## Pulse SQ



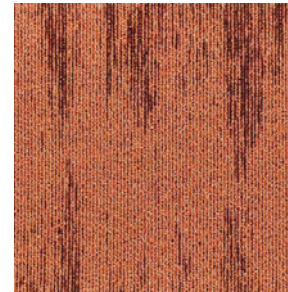
T10503 Fawn



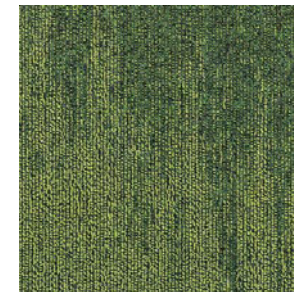
T10505 Clay



T10507 Pewter



T10512 Fire



T10513 Shamrock



T10514 Sapphire

### Specifications

Construction	1/12" Tufted Multi Loop
Yarn	100% nexlon™ Nylon
Pile Weight	16 oz/yd <sup>2</sup>
Total Thickness	7.7mm
Backing	Recyclable Commercial Duraback
Tile Size	50cm x 50cm
Packing	20 pcs per box (5m <sup>2</sup> )

### Performance

Radiant Panel	ASTM E 648 Class 1
Smoke Density	ASTM E662 Less than 450
Static Propensity	AATCC 134 Less than 3.5KV
Colour Fastness to Light	AATCC 16E ≥4
Dimension Stability	AACHEN ≤0.2%
Foot Traffic Recommendation	Heavy Commercial
Antimicrobial	Health Guard
Certificates	Singapore Green Label Certification Singapore Green Building Product Certification (4 ticks)

### Recommended Installation Method

