

# TOPAZ 10

CARPET TILES

100% SOLUTION DYED NYLON

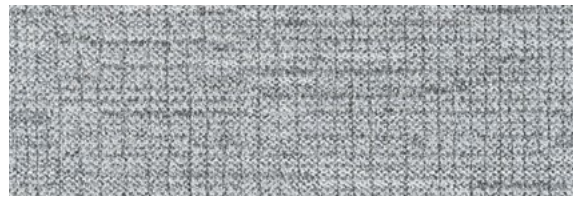
*Expanding Horizons*

1087 MOONSTONE CREAM  
1088 CALCITE BEIGE

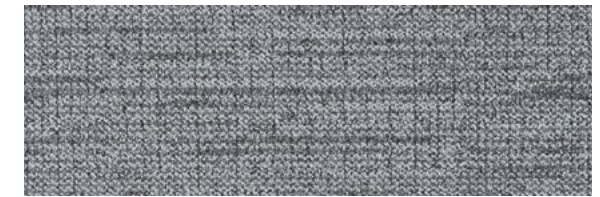


Ashlar

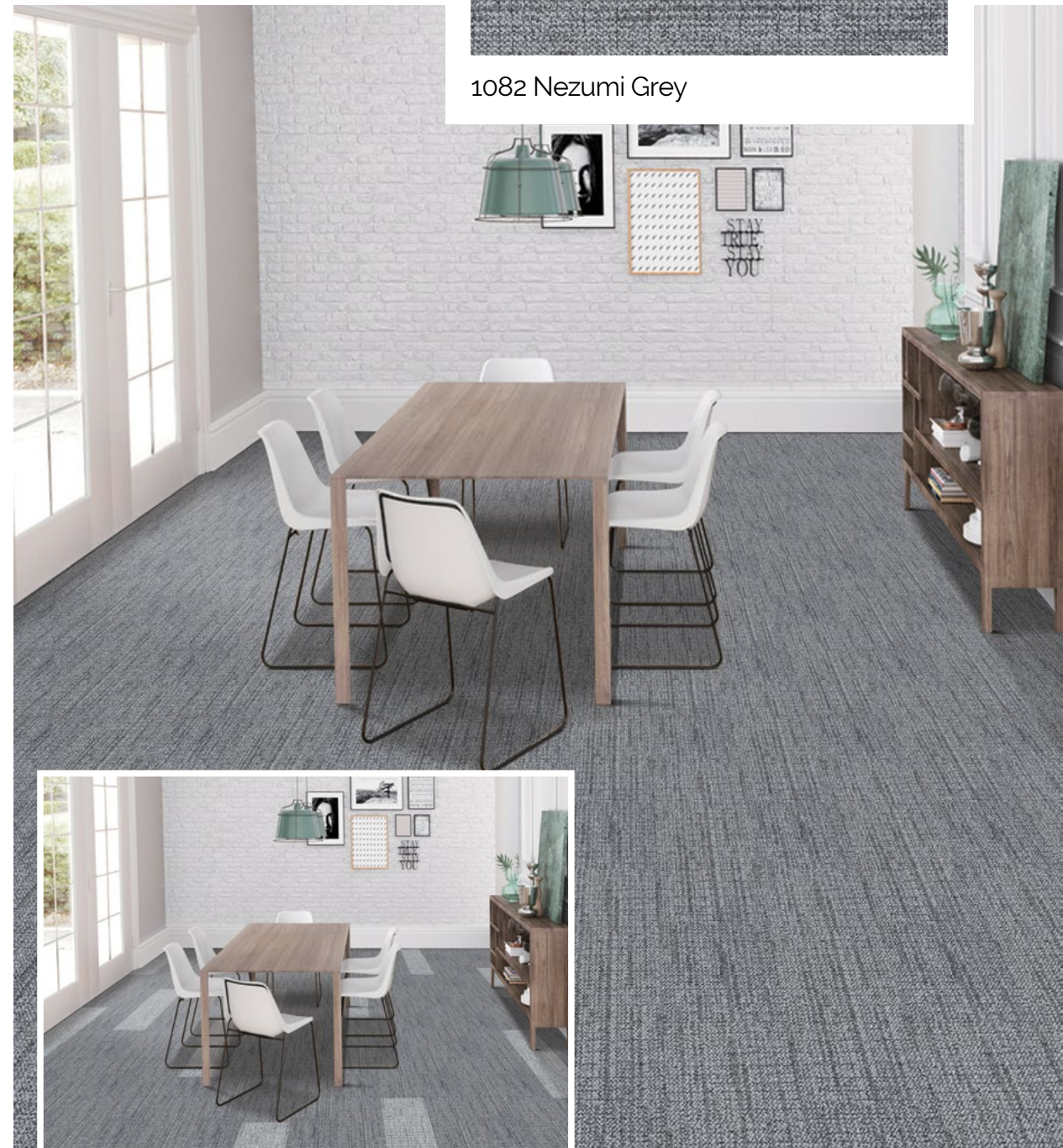




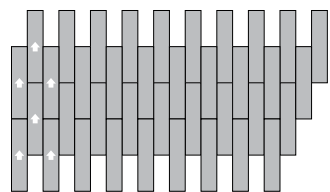
1081 Abbey Stone



1082 Nezumi Grey

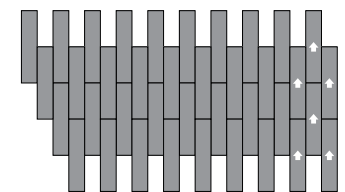


## Ashlar

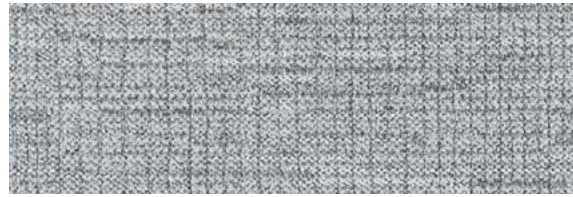


Exceptional Durability ♦ Easy Maintenance

## Ashlar



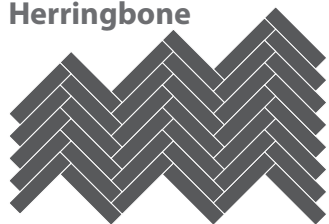




1084 Obsidian Black



Herringbone



Herringbone



Performance Certified ♦ Acoustic Comfort





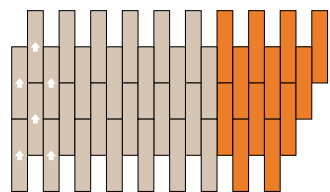
1087 Moonstone Cream



1088 Calcite Beige



## Ashlar



Sustainable ♦ Eco-Friendly ♦ Innovative Backing



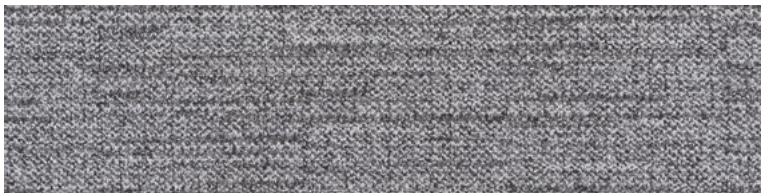
# TOPAZ 10

## SWATCHES

In Plank size 25cm x 100cm  
*Plank pattern are packed randomly per box.*



1081 ABBEY STONE



1082 NEZUMI GREY



1084 OBSIDIAN BLACK



1087 MOONSTONE CREAM



1088 CALCITE BEIGE



Disclaimer: The certifications included are valid as of the date this folder was created and may be updated. For the most current certifications, please contact our salesperson or visit our website.

### TOPAZ 10 Specifications

Construction	1/12” Multi-Level Loop Pattern
Tufted Pile Weight	100% Solution Dyed Nylon
Pile Weight	ca. 814 g/m <sup>2</sup> (24 oz/yd <sup>2</sup> ) (+/- 15%)
Total Weight	ca. 3,100 g/m <sup>2</sup> (91 oz/yd <sup>2</sup> ) (+/- 15%)
Pile Height	ca. Low 3 mm, High 6 mm (+/- 10%)
Total Height	ca. 7 mm (+/- 0.5 mm)
Density (APYD)	4,571 ozs/yd <sup>3</sup>
Tuft Density	121,920 stitches/m <sup>2</sup>
Stitch Rate	40 per 10cm
Backing	EcoAce Backing
Plank Size	25 cm x 100 cm
Packing	20 pcs per box (5 m <sup>2</sup> )

### Performance

(as tested by ITTS Inc. USA)

Stain Resistance	9 (AATCC-175-2003)
Static Control	Pass - Max. 4 kV (AATCC 134-1996)
Tuft Bind	Pass - 6.8 lbs (ASTM-D-1335)
Dimensional Stability	Pass - Max. 0.2% change (AACHEN)
Indoor Air Quality (V.O.C.)	Pass - No VOC Detected (ASTM-D5116-10)
Impact Sound Insulation	ΔLw: 28 dB (ISO 10140)
Sound Absorption	αw = 0.25 (H) (ISO 354)

### Flammability

- Radiant Panel	Pass - Class I (ASTM-E-648-06)
- Pill Test	Pass - 8 (ASTM-D-2859-96)
- Smoke Density	Pass - Max. 450 (ASTM-E-662-06)

### Colourfastness

- to Light	Excellent - 5 (AATCC-16E)
- to Wet & Dry Crocking	Excellent - 5 (AATCC-165)
- to Ozone	3 (AATCC-129)

Total Recycled Content	36% (By Weight)
------------------------	-----------------

### Warranties

15 Year Carpet Wear Warranty

Lifetime Anti-shock Carpet Warranty

Ideal for Heavy Commercial Use.

The subfloor should be dry, smooth, flat, dust-free, and resistant to compression and load-bearing. Visible seams are an inherent characteristic of carpet tiles and should be expected. Due to dye lot variations, the actual color may differ slightly from the samples. To prevent premature wear, the use of chair pads is recommended.

### Environment

The design and production of Topaz Collection Tile adhere to the ISO 14001:2004 Environmental Management System and comply with all environmental regulations.

As a responsible manufacturer, we strive to minimize our carbon footprint. A majority of our excess production materials are recycled in-house, resulting in at least 10% recycled content in our tile backing. Additionally, Topaz Collection Tile is free from PVC in both its materials and packaging.

Topaz Collection Tile is an environmentally friendly “green” carpet.



### Installation Method

