



Specifications

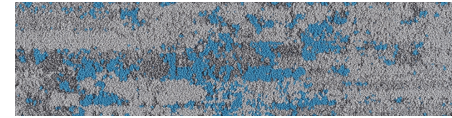
Construction	1/10" Multi-Level Loop Pattern
Yarn	100% Solution Dyed Nylon
Pile Weight	28 oz/yd ²
Pile Thickness	Between 3 to 6mm
Stitch Rate	38 per 10 cm
Secondary Backing	ECO Cushion Backing
Tile Size	50cm x 50cm
Packing	14 pcs per box (3.5m ²)

Performance

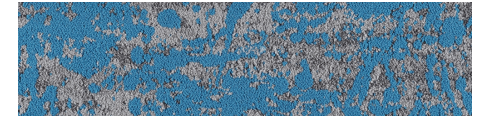
Flamability tests

a) Radiant Panel	Pass - Class II	(ASTM E-648-17)
b) Pill Test	Pass 8	(ASTM-D-2859-16)
c) Smoke Density	Pass – Max. 450	(ASTM-E-662-15a)
Stain Resistance	8	(AATCC-175-2003)
Wear Classification	Ideal for Heavy Contract Use	

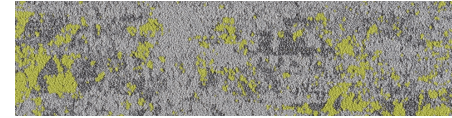
TRUE BLISS PLANK



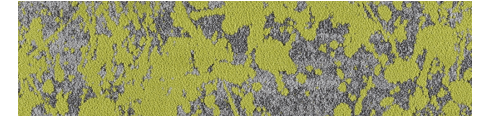
202B Bliss Blue



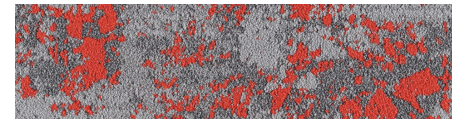
302B Caravan Blue



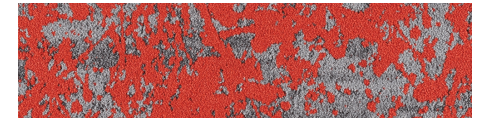
202G Bliss Green



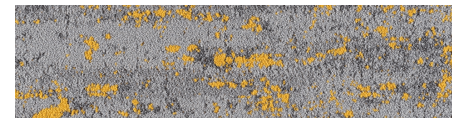
302G Verdant Green



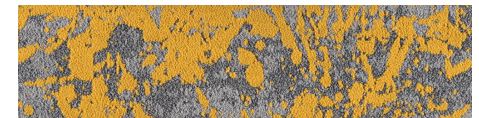
202R Bliss Red



302R Phoenix Red



202Y Bliss Gold

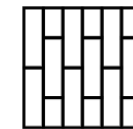


302Y Tropic Yellow

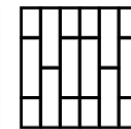


2019 Splash Grey

Installation Method



Ashlar



Ashlar &
Monolithic



Herringbone



Antistatic



Reduced Flammability



Wear Resistance



100% B.C.F. Yarn



Dimensional Stability



Anti-slip



Passed Various Tests



Comfortable



ISO9001:2000



RECYCLED